

Tacoma
Retail Sales Tax New Location Codes
Effective January 1, 2022

Effective January 1, 2022, new location codes are established within certain areas of the Puyallup Tribe's boundary. Activity between non-tribal businesses and non-tribal members within these areas, defined by the attached maps, should be reported to location code 2741. The new location code represents a reporting change only; **the rate has not changed**.

Non-tribal persons or businesses within this boundary will report use tax to the new location code on items purchased for their personal or business use if sales tax has not been paid.

The location code for sales and use tax is:

Location	Location Code	Local Sales Tax Rate	State Sales Tax Rate	Total Sales Tax Rate
Puyallup Tribe – Tacoma	2741	.038	.065	.103

For tribal owned or tribal member owned businesses, please continue to report to the existing location code.

To determine the proper codes and rates of local sales tax, you may access our Tax Rate Lookup Tool located at dor.wa.gov. On the home page, click on the **Find a sales and use tax rate** link.

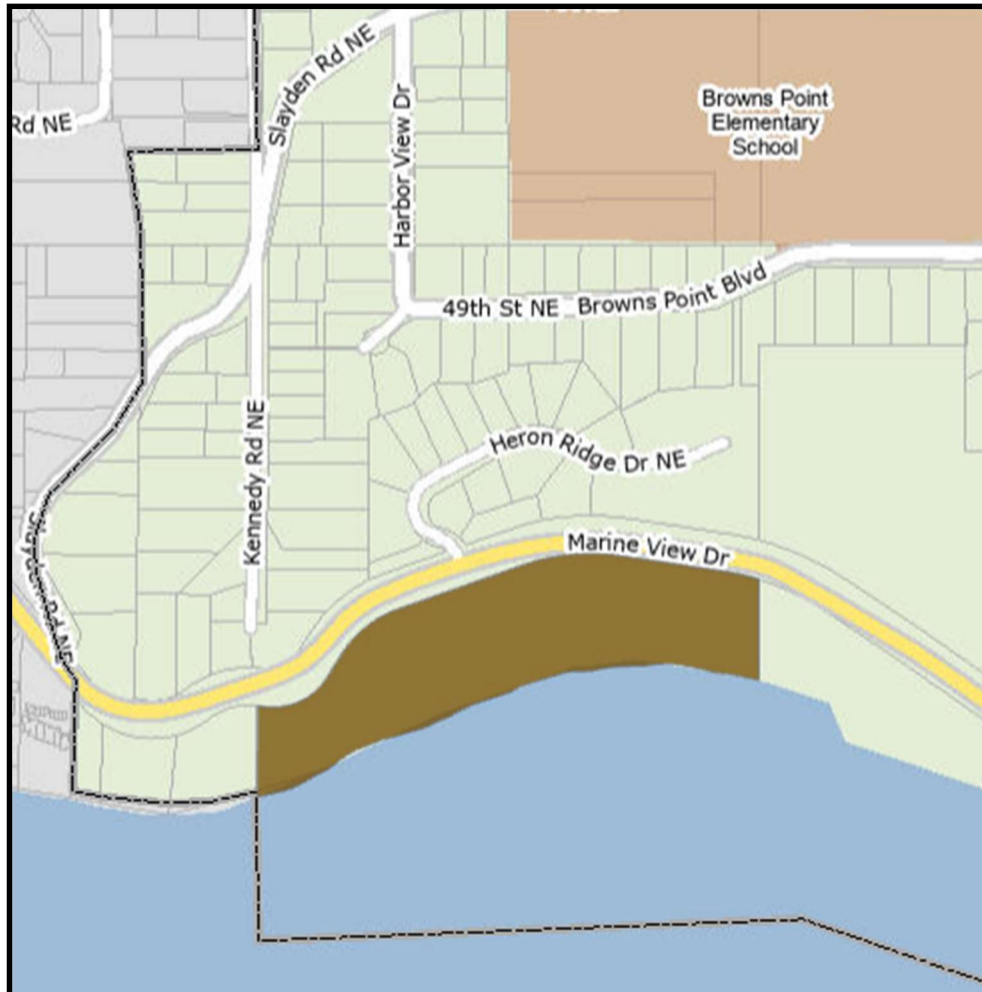
This notice is being sent to businesses that have reported local sales or use tax to Tacoma within the last year.

If you have questions, or if Sales Tax Collection Schedules are needed, please go to our website at dor.wa.gov or call the Department of Revenue at 360-705-6705.

Puyallup Tribe – Tacoma (2741)

Retail sales activity between non-tribal businesses and non-tribal members in the brown colored area that is within Tacoma should be reported to location code 2741.

To determine the proper codes and rates of local sales tax, we recommend you access our Tax Rate Lookup Tool located at dor.wa.gov. On the home page, click on the **Find a sales and use tax rate** link.

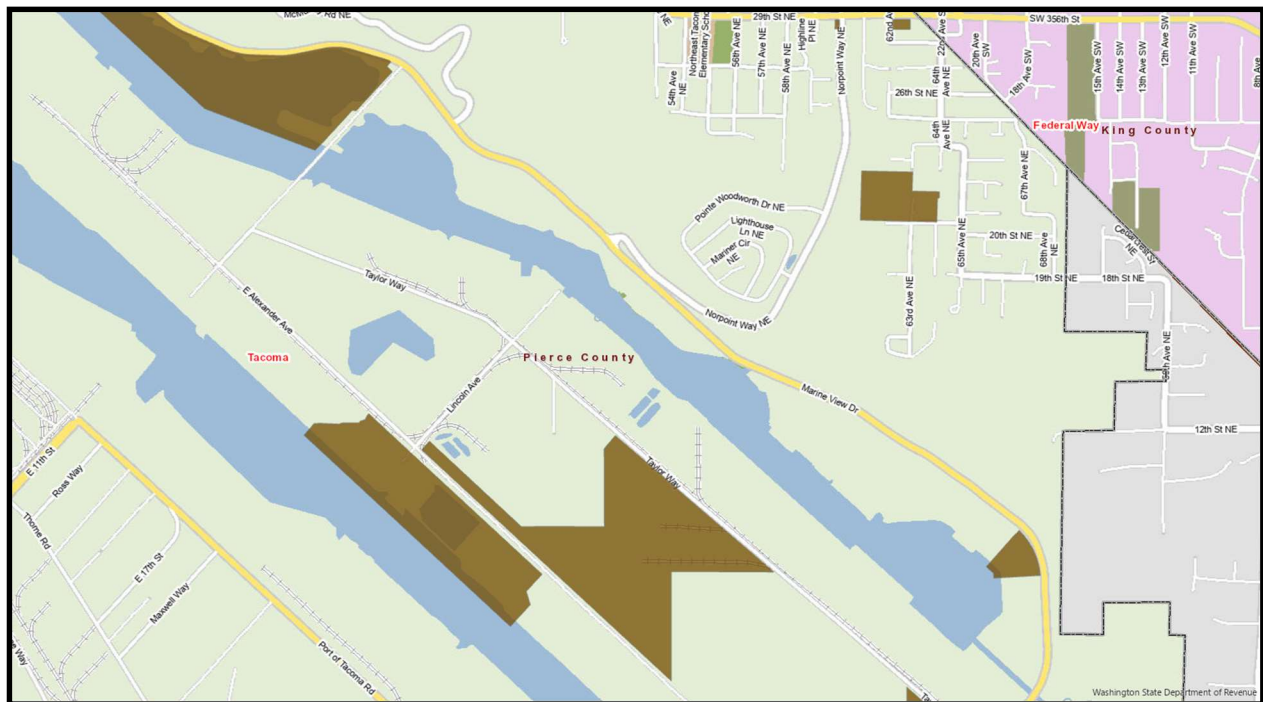


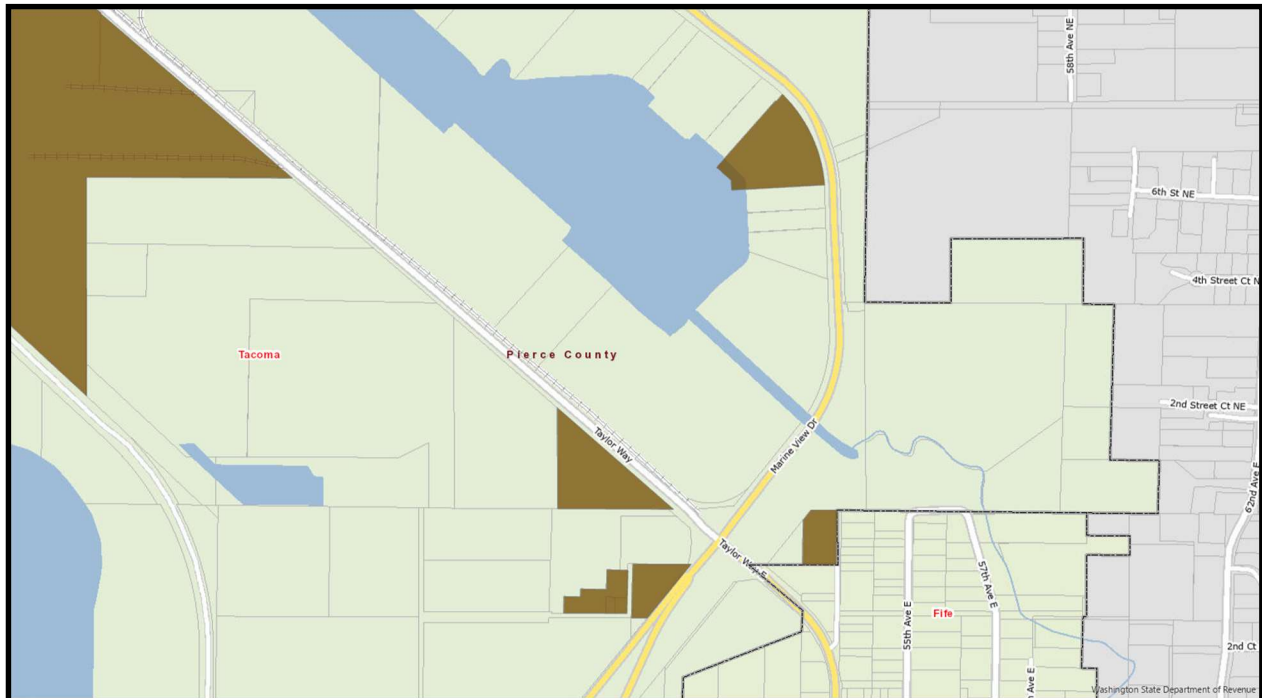
State of Washington
Taxpayer Account Administration
PO Box 47476
Olympia WA 98504-7476

For tax assistance or to request this document in an alternate format please call 360-705-6705. Teletype (TTY) users may use the Washington Relay Service by calling 711.

(REV 11/1/21)

WASHINGTON STATE DEPARTMENT OF REVENUE
LOCAL SALES TAX CHANGE



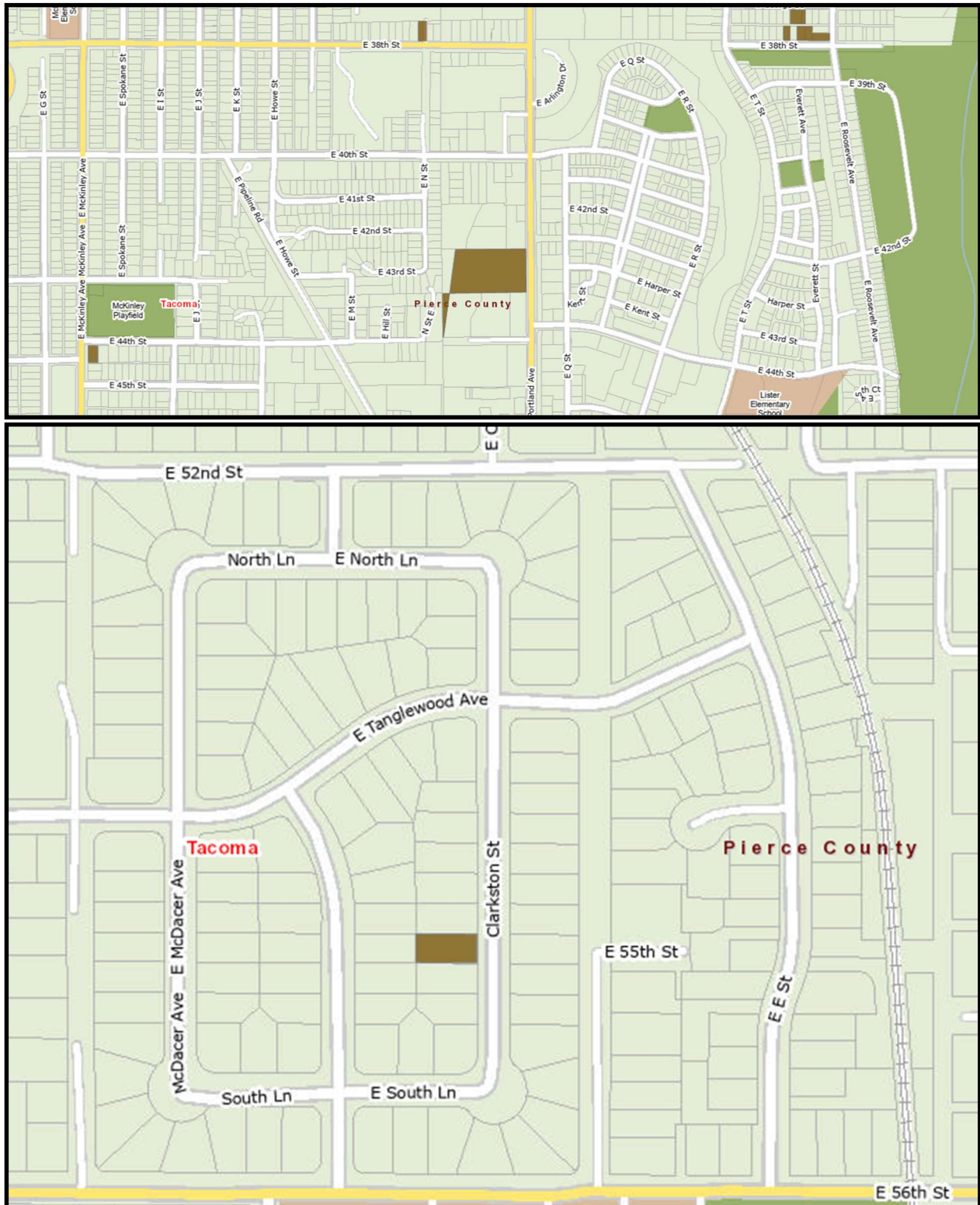


State of Washington
Taxpayer Account Administration
PO Box 47476
Olympia WA 98504-7476

For tax assistance or to request this document in an alternate format please call 360-705-6705. Teletype (TTY) users may use the Washington Relay Service by calling 711.

(REV 11/1/21)





State of Washington
Taxpayer Account Administration
PO Box 47476
Olympia WA 98504-7476

For tax assistance or to request this document in an alternate format please call 360-705-6705. Teletype (TTY) users may use the Washington Relay Service by calling 711.

(REV 11/1/21)